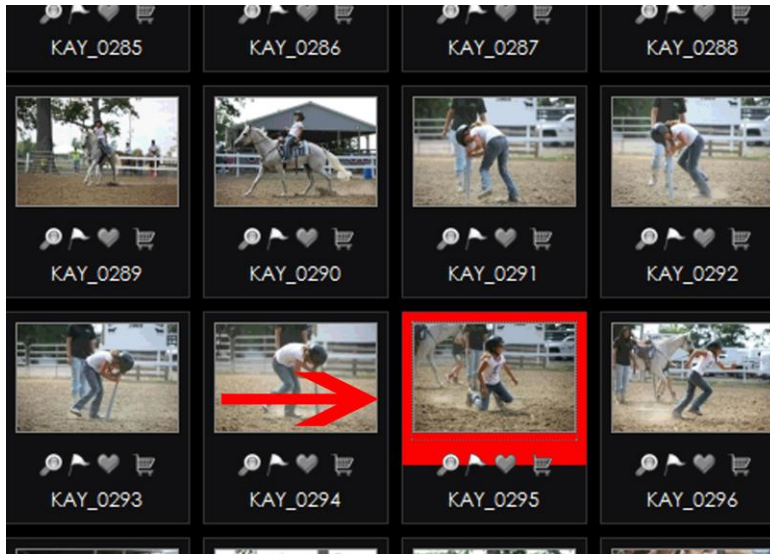
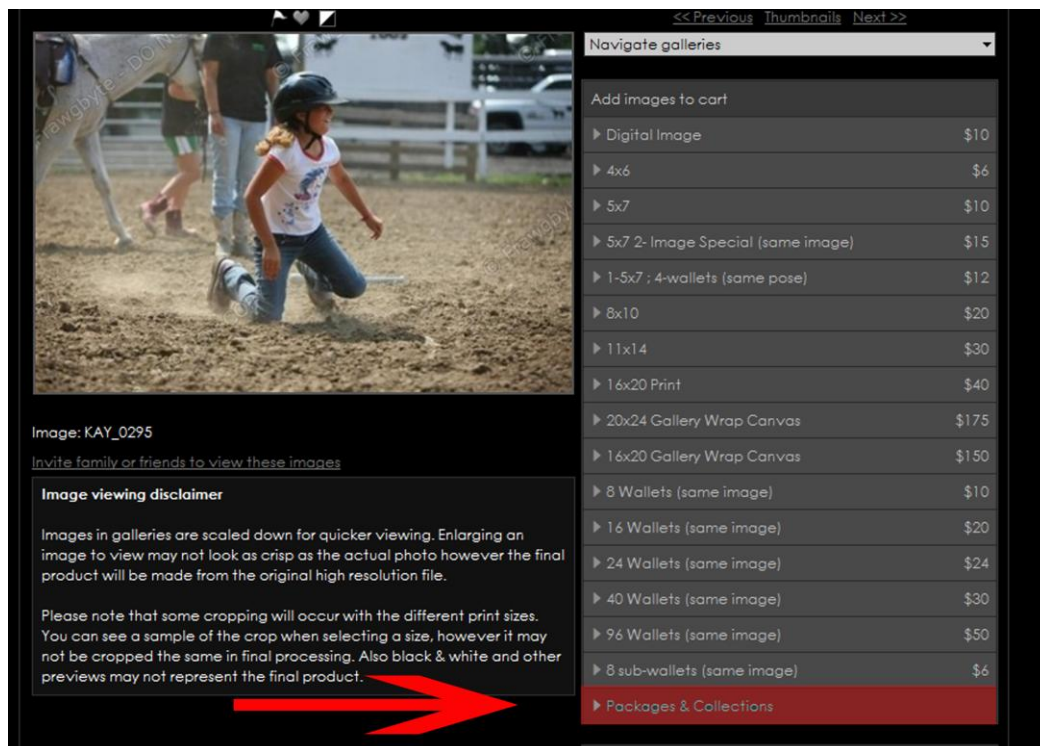


# Steps to add photos to Photo CD

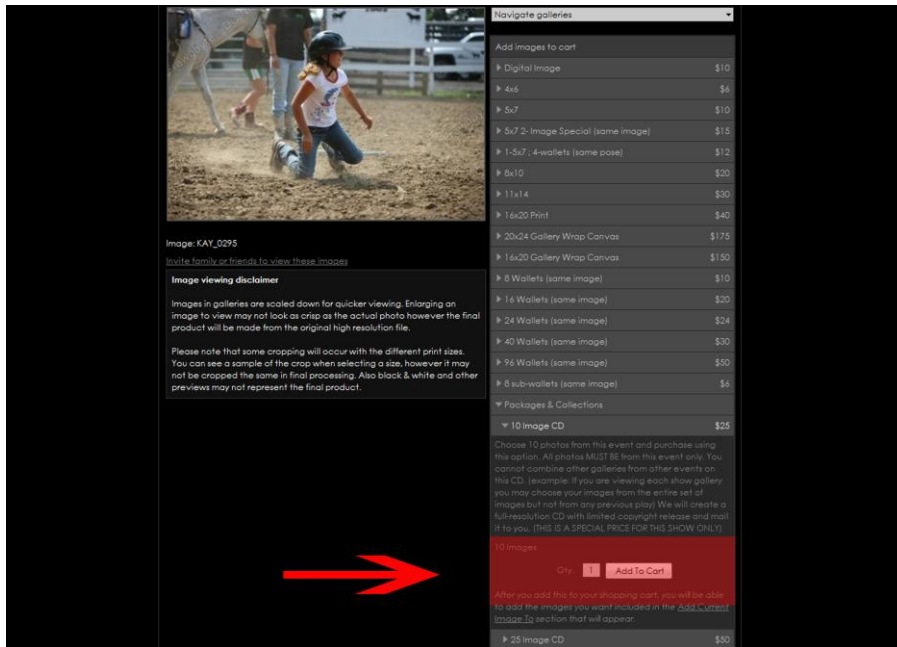
1. In your selected gallery click on a photo to add to your cd.



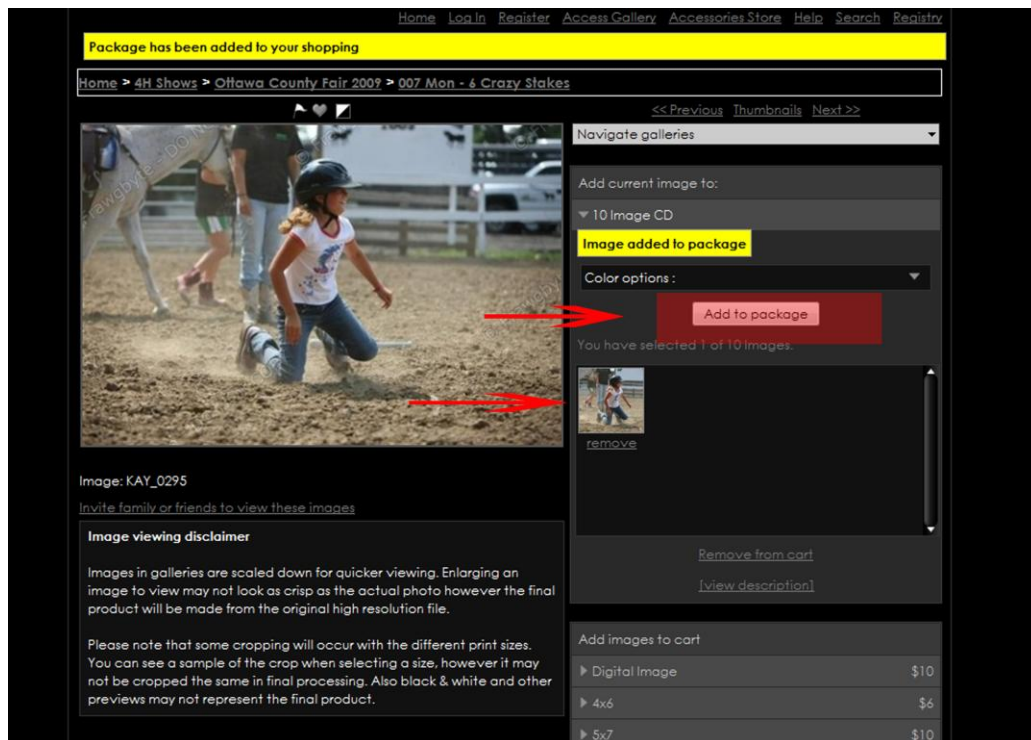
2. The price menu will come up on the right of your selected photo. Click on **“Packages & Collections”**.



- Once clicked you will see package options. Select 10 or 25 image CD.
- Click on the **“Add To Cart”** button.



- Once added to the cart you will be directed back to the image. Look to the right and click on the 10 (or 25) image CD that you added to the cart. It will initially say **“0 of 10 (or 25) images”**.
  - Click on the **“Add to Package”** button.



- From here just go back to the galleries and select your final CD images, adding them to the package until your CD is filled up.

The screenshot shows a web gallery interface. At the top, there are navigation links: Home, Log In, Register, Access Gallery, Accessories Store, Help, Search, and Registry. Below this is a breadcrumb trail: Home > 4H Shows > Ottawa County Fair 2009 > 042 Thurs - Mud Fight. The main area features a large image of a young child with a muddy, pinkish-brown shirt and dark pants, standing in a muddy field. To the right of the image is a control panel. At the top of this panel are navigation links: << Previous, Thumbnails, Next >>. Below these is a 'Navigate galleries' dropdown menu. The main section is titled 'Add current image to:' and shows a selection of '10 Image CD'. Underneath, there is a 'Color options:' dropdown menu. A prominent red arrow points to a white button labeled 'Add to package'. Below the button, it says 'You have selected 1 of 10 Images.' There is a small thumbnail of the selected image with a 'remove' link below it. At the bottom of the panel, there are links for 'Remove from cart' and '[view description]'. At the very bottom of the interface, there is a section titled 'Add images to cart'.

If you have any questions or problems call John at 248-860-5365 (mobile)